

Guess Who I Am!

Pre-school Exhibit Hall Activity

This pre-school activity is designed to allow the interaction of children and adults throughout the Exhibit area. Adults will guide the children to the animal (or have the child find them) as indicated on the map below and children can guess what the animal is as well as what type of animal they are viewing (mammal, bird or reptile).

As you enter the **Dynamic Earth Hall**:

LOOK UP! Say, "Guess what animal this is". Some children may say a bird. It does have many bird-like qualities. It does not have feathers though. This is a **pteranodon**. When you go to the other side of this exhibit you can see the babies!

LOOK IN THE CENTER OF THIS EXHIBIT! Say, "Guess what animal this is". (**An Albertosaurus**) Some may say a T-Rex and this dinosaur looks very much like one. The Albertosaurus lived in what is now Alabama!!

Explain that these animals are not found on earth anymore.



Pteranodon



Albertosaurus

Now finish exploring this area and don't forget to visit the cave to see how many more animals you can find.

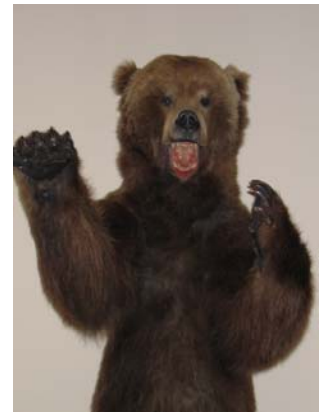
Visit **Nature Space**, the **hands-on discovery room** and then complete this activity.



As you exit the hands-on discovery room, Nature Space, you will see this animal right in front of you. Say to your child, "Guess what animal this is". (**This is a Cougar**) If they say a cat, that is correct. For older children you might want to tell them the correct name for this animal. Share with your child that this is a mammal because it has fur on its body.

Now, continue to your left, don't miss the aquarium with the **turtles!**

Just around the corner from the beach scene you will find this animal. Say, "Guess what this animal is". (**This is a Alaskan Brown Bear**) If they say bear, that is correct. This is a mammal. Ask, "Why is it a mammal"? (It has fur).



Continue to explore this Hall called Attack and Defense. Don't miss the live **snakes** to your left (if the child is not afraid to look at them).

When you enter the Bird Exhibit Hall called Designs for Living you will have two animals to look for. Find this animal pictured below (on the left after the alligator exhibit) and say, "Guess what this animal is". (**These are Whooping Cranes**). If they say a bird, that is correct. Discuss that birds have feathers. This bird has very long legs so it can walk in a pond and a sharp beak for spearing fish.



Now explore this Hall some more until you find these three animals. Say "Guess what animal this is". (Snowy Owls) If they say birds, that is correct. It has very big eyes which help it to hunt at night.



Now it is time to visit Africa. Find this beautiful animal. It has fur and roars. Say, "Guess what this animal is". It is a **Lion (or Cat)**. If it has fur, what type animal is it? (A mammal).



Continue to explore the African Hall. There are many large animals that live in Africa. Find the animal that looks like it is wearing striped pajamas! Say, "Guess what animal this is". (**A zebra- some may say a horse and it is very much like a horse- talk about the similarities**). A Zebra has fur/hair. What type animal is it? (A mammal).



Now, continue to explore Africa and move through the Egypt Gallery.

Have a great day and come back to see us soon.